

KEYCREATOR[®] 2017

What's New

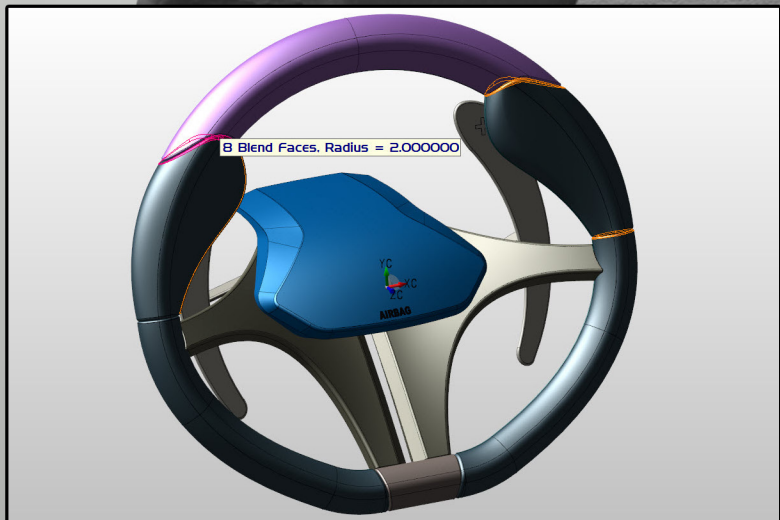


Table of Contents

Benefits	3
User Interface	3
Explode Solid	4
Draft Analysis	5
Detailing	5 - 6
Interoperability	7
CATIA V5 R26	7
Solidworks	7
Siemens PLM NX	7

Benefits

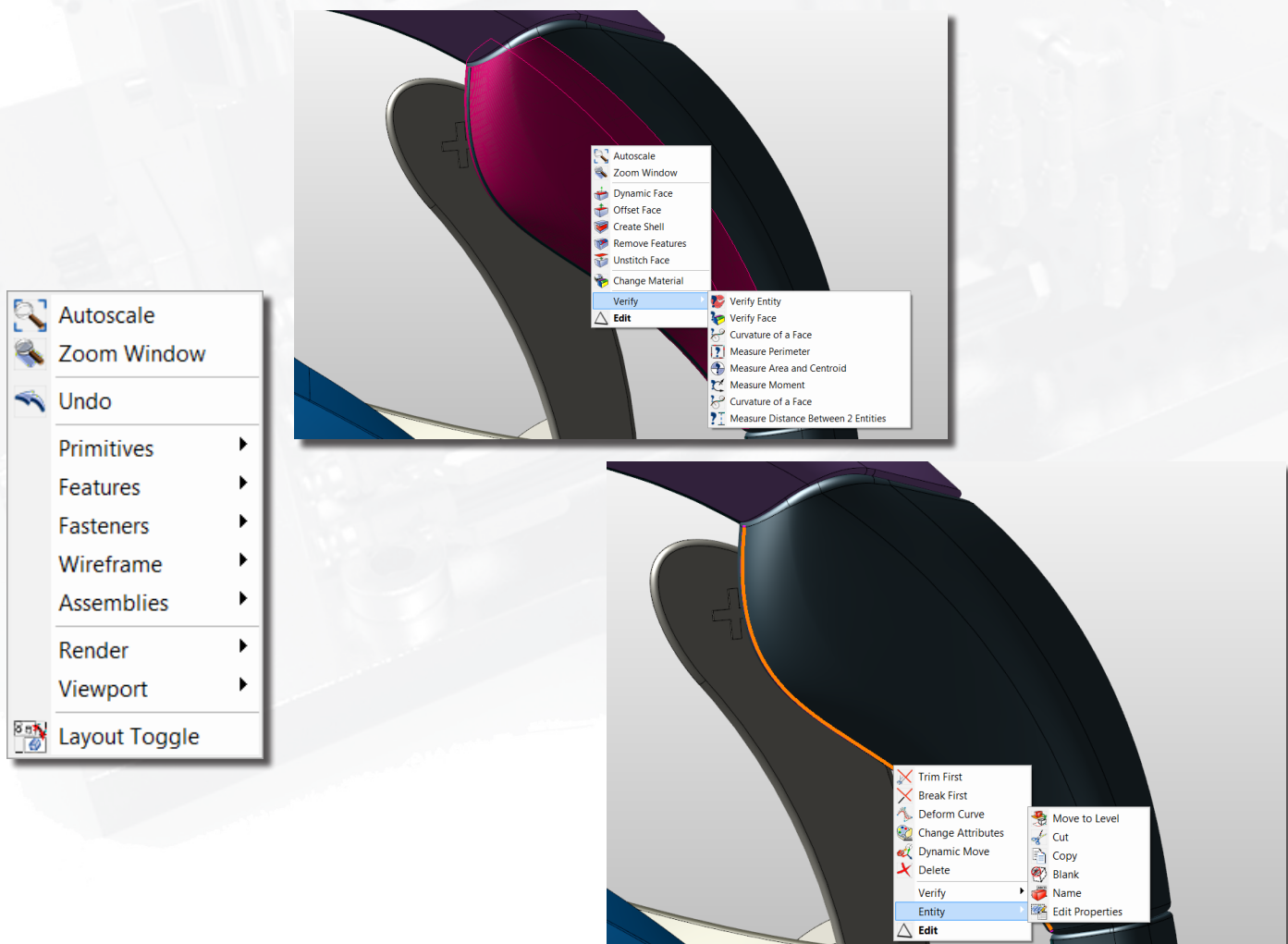
The most recent release of KeyCreator 2017 version 14.5 adds several new features and functions for improved ease-of-use and better design conceptualization and manipulation. Many customer-driven enhancements also provide the productivity and flexibility that KeyCreator Direct CAD is known for.

The efficient design-to-manufacture prowess and legendary CAD data reuse of KeyCreator is further enhanced in this release with new design data import options and updated file reading capabilities plus help users reduce cost.

User Interface

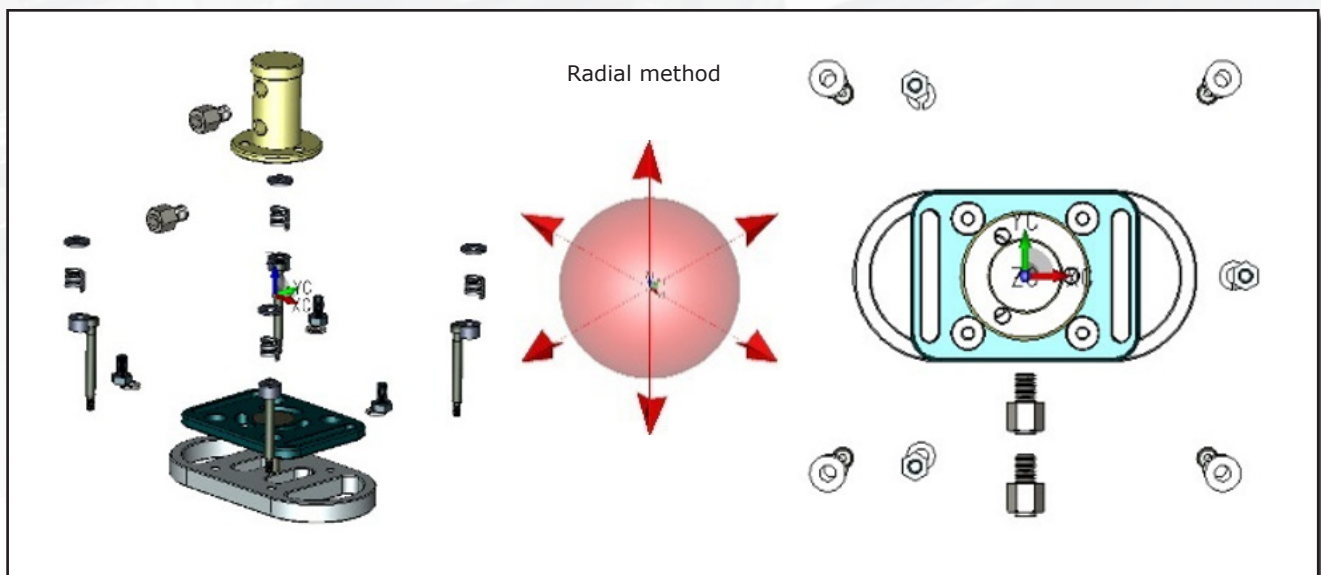
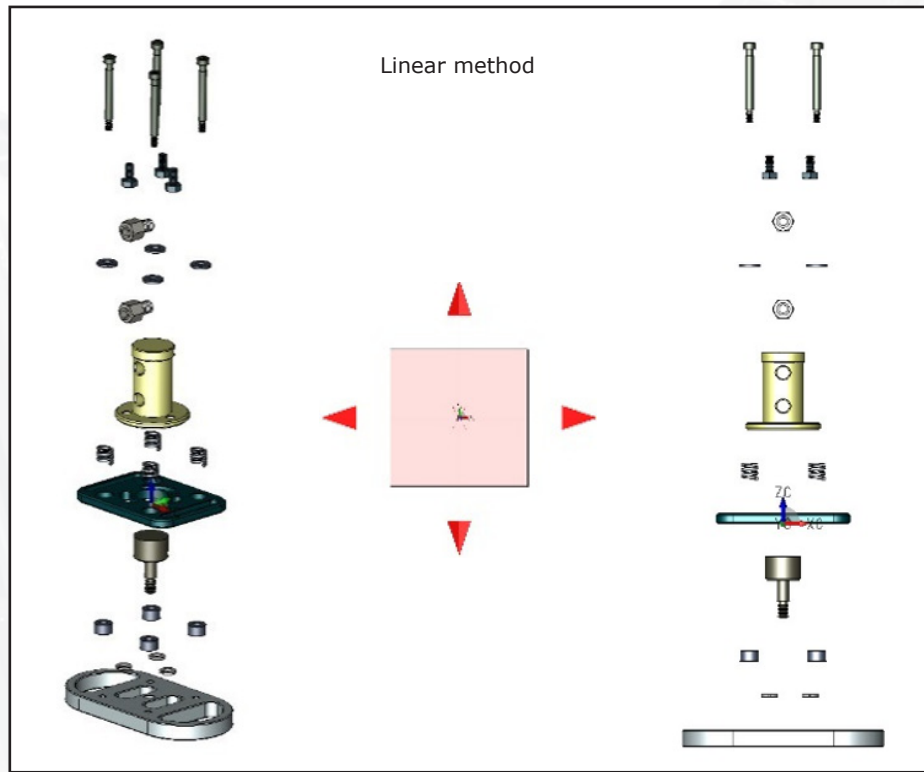
New & improved pull-down and context sensitive menus

- Menu option change depending on the entity highlighted
- Basic creation functions are now available through the RMB when not over an entity
- Double click the left mouse button and the **Bold** text function in the menu activates
- Pull-down menus have been cleaned up & reorganized to boost productivity



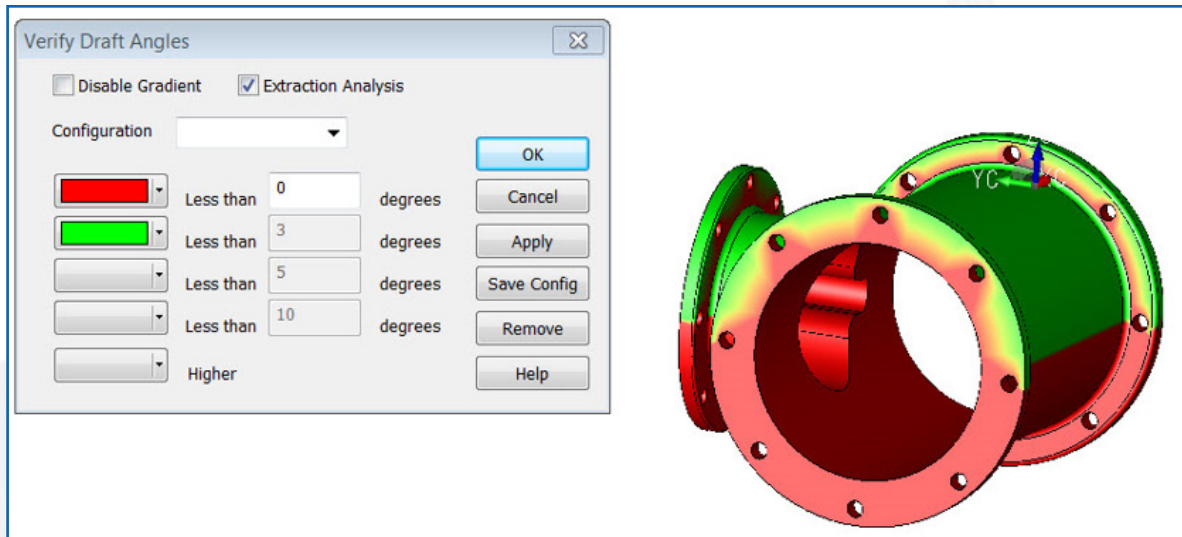
Explode Solid

- New Radial direction option
- Fresh dialog windows for both Radial & Linear options
- Self Autoscale option
- Accepts both solids & part references
- Both options can be used in combination giving the user more flexibility



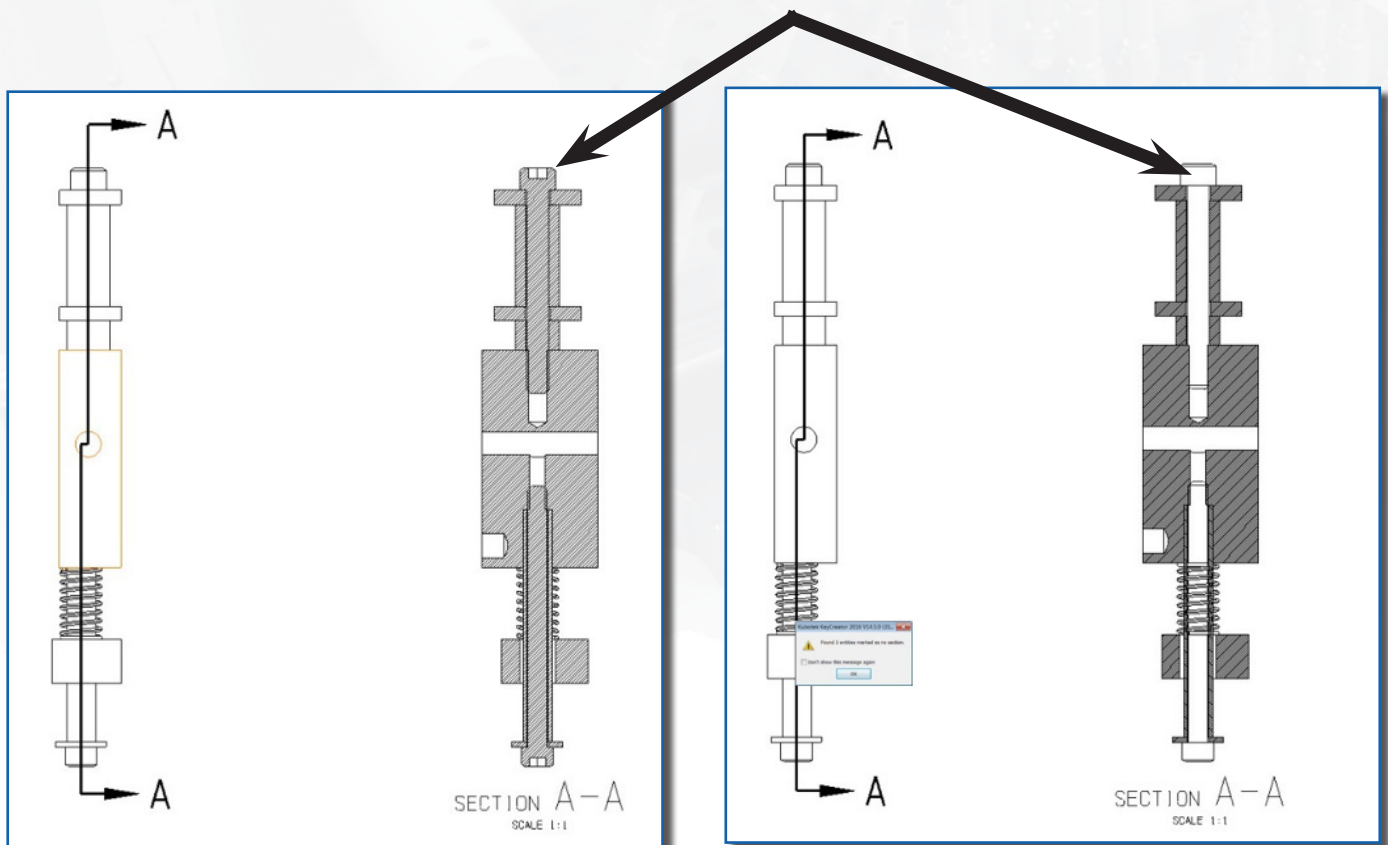
Draft Analysis

- New Extraction Direction added making it easier for the user to identify undercuts in models. This also makes it easier to find draft angle problems earlier in the mold design process saving time and money

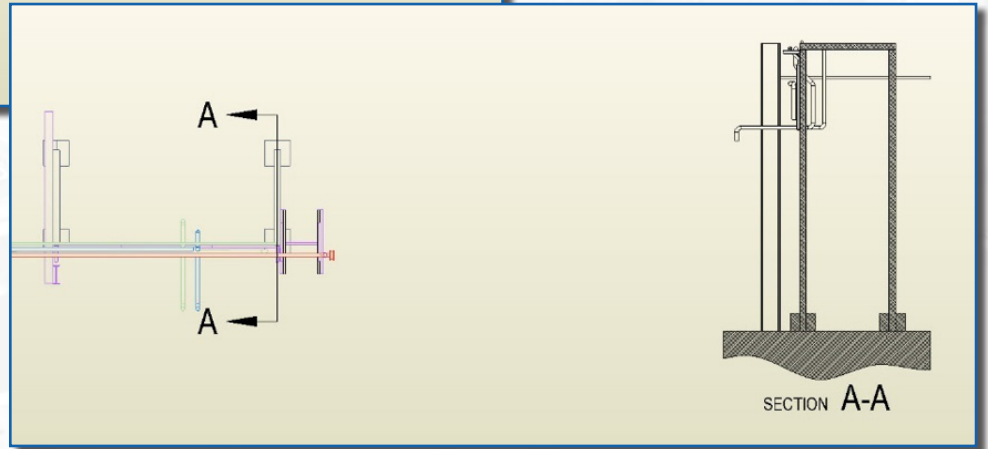
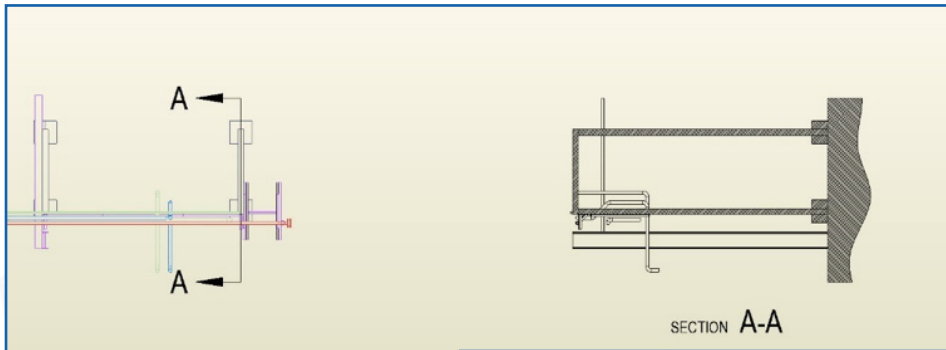


Detailing

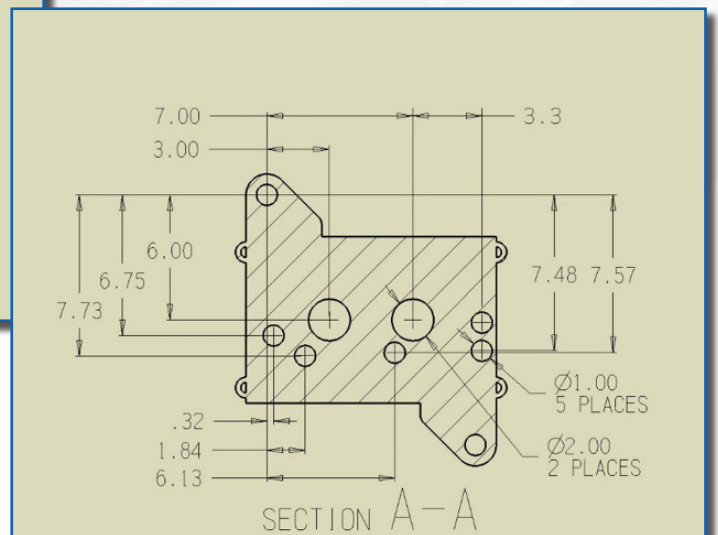
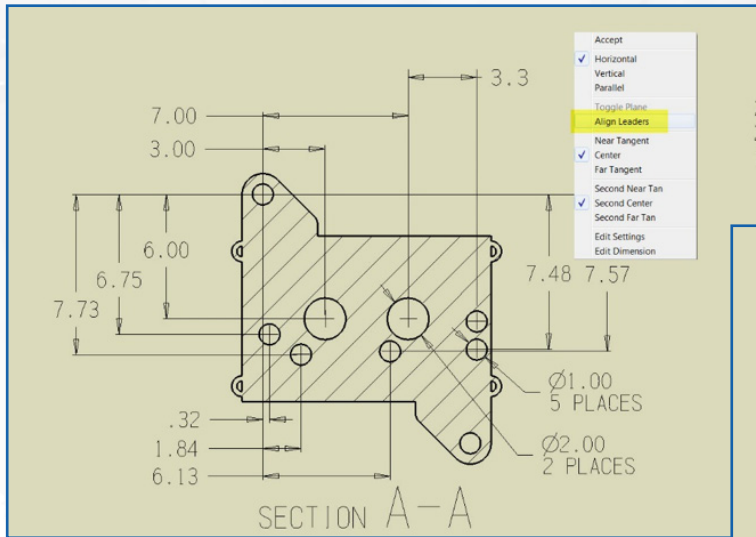
- A distinct "Not Sectionable" option has been added to automatically prevent solids from being sectioned in a Section view



- New Section View "Rotation" option added



- New Align Leader to Quick Dimension context menu
- KeyCreator will now automatically align dimensions based on user selection



Interoperability

KeyCreator continues improvements on its extensive import capabilities with several interoperability updates.

CATIA V5 R26

- PMI read up to V5 R26 is also known as V5-6 R2016 or R2016x

Solidworks

- PMI read extended to 2016 - 2017

Siemens PLM NX

- PMI read extended to NX 11

KUBOTEK®
MASTER YOUR GEOMETRY

Kubotek USA, Inc.

2 Mount Royal Ave. Suite 500, Marlborough, MA 01752

Phone: 800-372-3872

www.kubotek3d.com

sales@kubotek3d.com

