

KEYCREATOR[®] 2017

What's New

V15.0

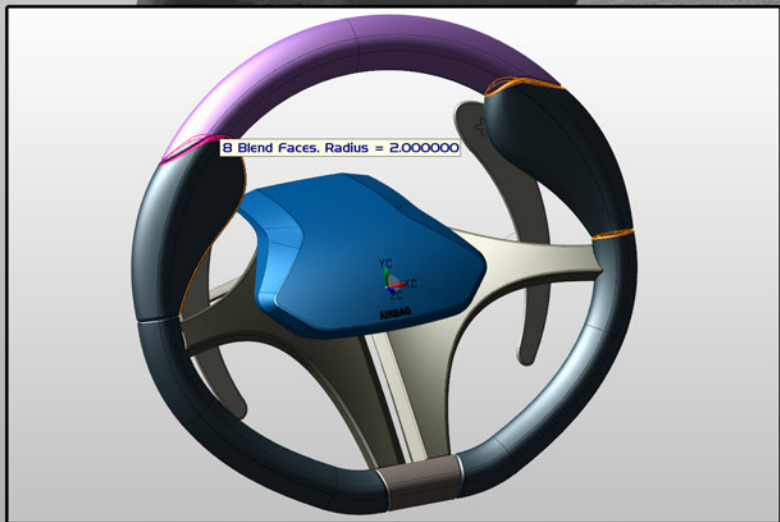


Table of Contents

Benefits	3
Graphics	3
Detailing	3
Rail Sweep	4
Multi-Profile Sweep	5
Loft	5
Interoperability	6
CATIA V5 R27	6
Solidworks	6
Siemens PLM NX	6
Inventor	5
CREO	6
Parasolid	6
ACIS	6
Solution Partner	7
openBoM	7

Benefits

The version 15.0 release of KeyCreator 2017 enhances user control of several key surface modeling functions with proprietary Kubotek technology and significantly improves performance of drawing layout instance updating and resizing. New DirectX 11 support dramatically increases display update speed and frame rates. Also added are customer-driven options for offsetting linear dimension text and section view and file preview image settings.

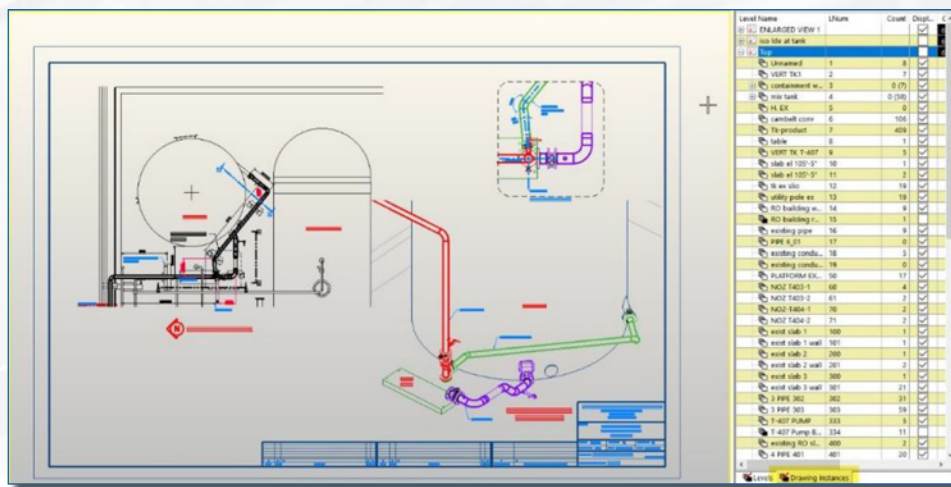
Graphics

KeyCreator 2017 is boosted with new DirectX 11 graphics capabilities in the V15 release. DirectX 11 has provided significant performance improvements in graphics display update and frame rates. Kubotek testing has shown an average 10% speed improvement across a large suite of models and drawings with 400% speed improvement in some cases.

Detailing

Improved instance updating

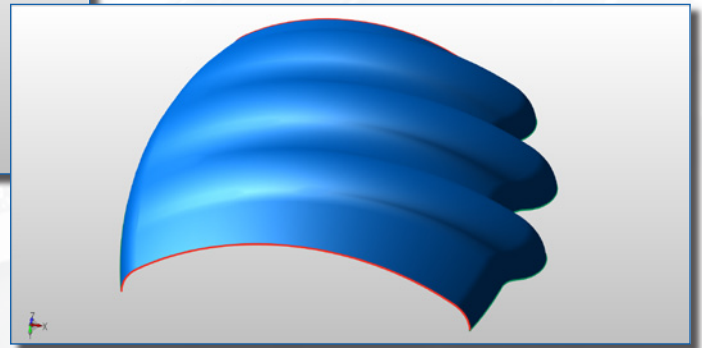
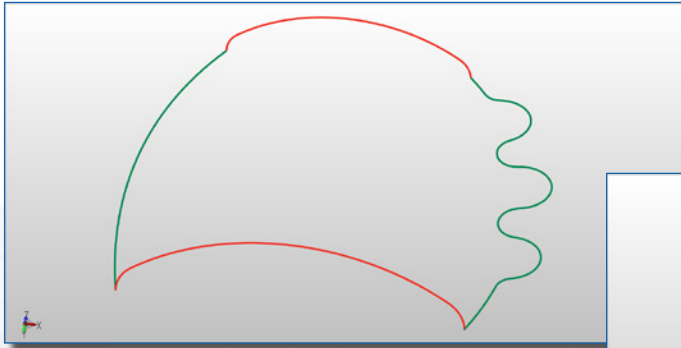
- Eliminates unnecessary processing
- Remembers update status when opening a file
- No processing when resizing an instance



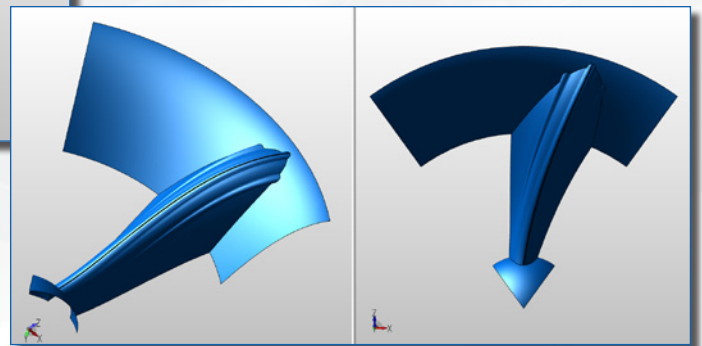
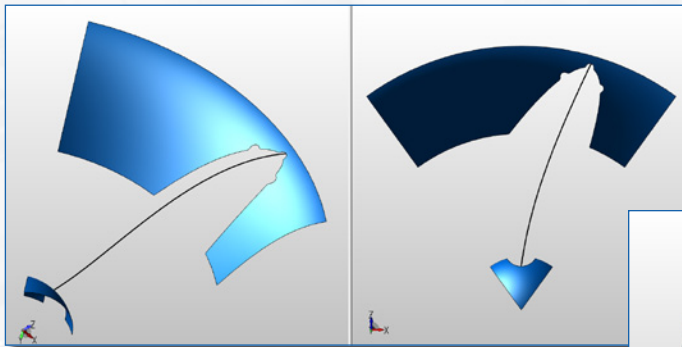
Rail Sweep

New & improved Rail Sweep - Streamlined sweep function

- Sweep one or two profiles with single or multiple entities
- Shape will follow along one or two paths
- New window selection of profiles and paths
- Function dialog window has been streamlined for user productivity
- Create surfaces or solids in one function, all in one function



Example with 2 multi curve profiles and 2 multi curve paths

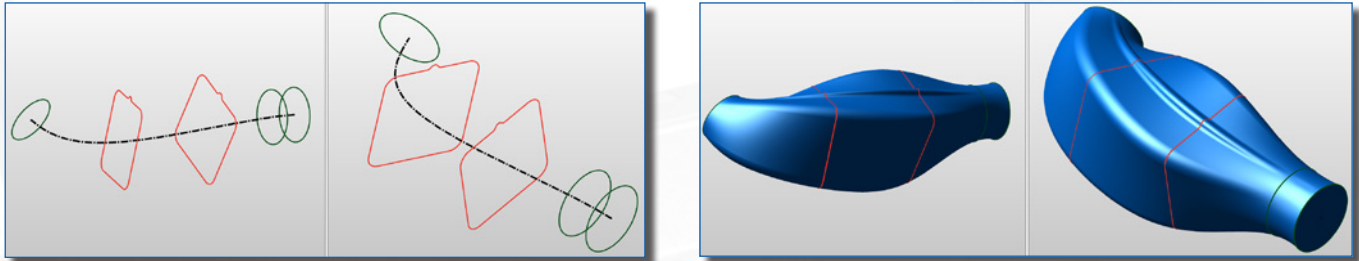


Example with 2 multi curve profiles and 1 path

Multi-Profile Sweep

New Multi-Profile Sweep - Users can now easily create solids/surfaces through multiple sections

- Sweep multiple profiles with single or multiple entities along a given path
- Shape will morph between profiles along the path
- New window selection of profiles and paths
- Create surfaces or solids in one function, all in one function

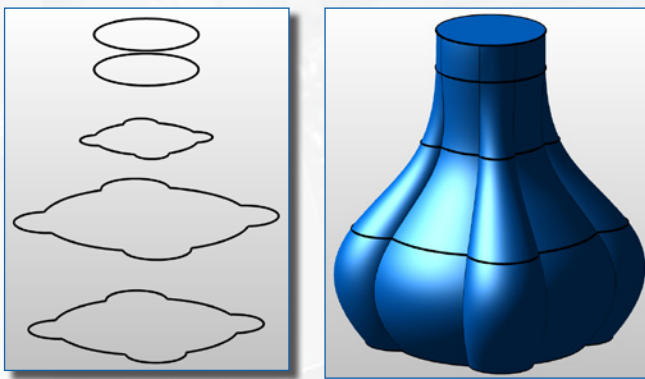


Example with multiple profiles sweeping along a path

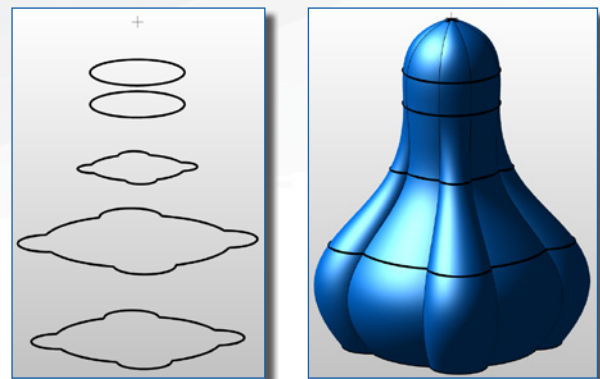
Loft

New and improved Loft - Giving users more options and flexibility than ever before

- Profiles automatically be ordered
- No restriction in selection direction, window selection of profiles and paths
- Ability to create shapes tangent to surfaces/solids
- Wireframe entities can be created by lofting through a set of points
- Function dialog window has been streamlined for user productivity
- Create surfaces or solids in one function, all in one function



Example of Loft through multiple profiles



Example of Loft through multiple profiles and a point

Interoperability

KeyCreator continues improvements on its extensive import capabilities with several interoperability updates.

CATIA V5 R27

- Read/Write extended up to V5 R27 is also known as V5-6 R2017 or R2017x

Solidworks

- Read extended to 2017

Siemens PLM NX

- Read extended to NX 11

Inventor

- Read extended 2017

CREO

- PMI read extended CREO 4

Parasolid

- Read/Write extended to Parasolid 29

ACIS

- Read/Write extended to 2017

openBoM

New Solution Partner Integration openBoM

- Direct integration with KeyCreator - For referenced assemblies, Part properties are automatically transferred to openBOM and BOM is automatically generated
- Direct replacement for managing BOMs using spreadsheets
- Cloud Based - accessible from any device, searchable and editable BOMs and Inventory
- Collaborative so that everyone involved (Engineering, Manufacturing, Purchasing) is viewing and working off of the same BOM
- Revision control
- BOM can be exported from openBOM to XCEL, PDF or CSV as needed
- Free personal use account

KUBOTEK®
MASTER YOUR GEOMETRY

Kubotek USA, Inc.

2 Mount Royal Ave. Suite 500, Marlborough, MA 01752

Phone: 800-372-3872

www.kubotek3d.com

sales@kubotek3d.com

