

KUBOTEK®



CAD File Discrepancy Report Software

What's New in 2.0

Table of Contents

Assembly Compare

New Semantic PMI Compare

PDF Report Captures

Measure Angle

Folder Compare

Read Formats

PAGE

3

4

5

6

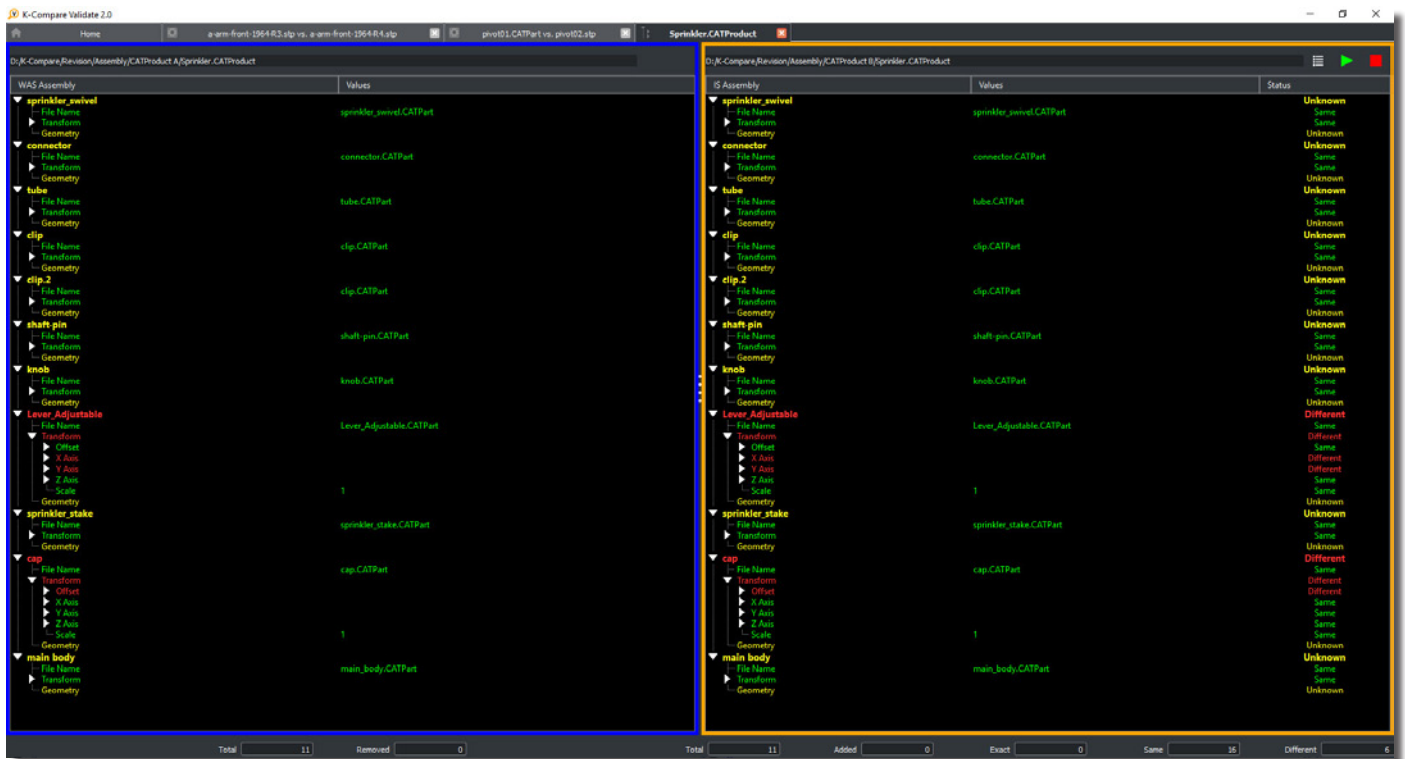
7

8

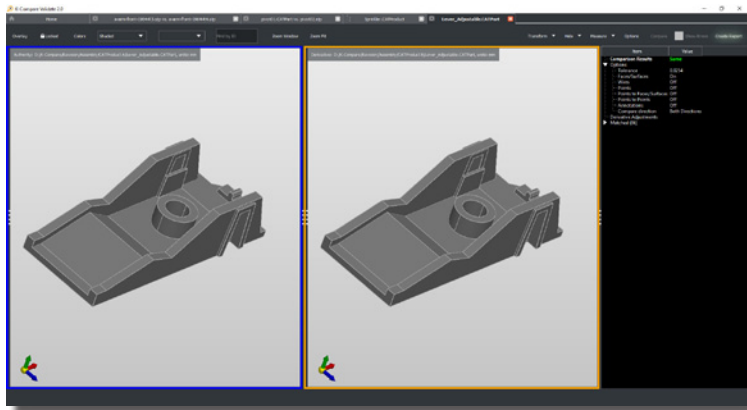
Assembly Compare

Assembly structure as well as part comparisons can now be accomplished with this comprehensive new functionality.

- The quick first-pass test compare assembly BOM, identifying name changes, part references added or removed from assemblies, and positional differences within the assembly.
- Compare Part reference geometry individually or all at once. This gives the user greater flexibility and saves time when only a sub-set of parts in the assembly need comparison.
- Easy-to-read pass/fail color scheme makes status of part references clearly stand out within assemblies.
- Quickly open part reference files directly from the assembly tree list for further review.
- Option to create a report of the assembly compare.



Assembly structure compare list - easy to read pass or fail

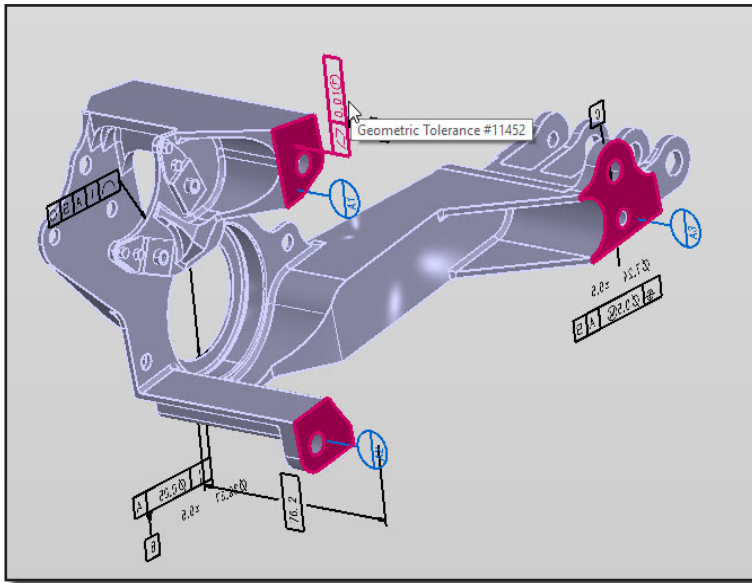


Part reference files can be opened directly from the assembly compare list for further review

New Semantic PMI Compare

K-Compare Validate has been enhanced to support comparison of the semantic meaning of PMI data such as notes and associative GD&T callouts.

- The function matches and highlights the PMI data and the faces associated to the PMI data.
- Users can easily see any faces associated to the PMI by selecting the PMI or the PMI node in the results tree list.



Item	Value
Comparison Results	
Different	
Options	
Tolerance	0.001
Faces/Surfaces	On
Wires	Off
Points	Off
Points to Faces/Surfaces	Off
Points to Points	Off
Annotations	On
Compare direction	Both Directions
Derivative Adjustments	
Different (1)	
Authority Radial Dimension #4040, Derivative Radial Dimension #1338 Annotations Error	
Matched (130)	
Authority Datum Target #4342, Derivative Datum Target #269	
Authority Datum Target #4313, Derivative Datum Target #327	
Authority Datum Target #4284, Derivative Datum Target #298	
Authority Radial Dimension #4151, Derivative Radial Dimension #341	
Authority Linear Dimension #3775, Derivative Linear Dimension #794	
Authority Linear Dimension #3425, Derivative Linear Dimension #461	
Authority Linear Dimension #3191, Derivative Linear Dimension #861	
Authority Linear Dimension #3051, Derivative Linear Dimension #534	
Authority Linear Dimension #2971, Derivative Linear Dimension #1258	
Authority General Symbol #2744, Derivative General Symbol #204	
Authority General Symbol #2664, Derivative General Symbol #169	
Authority General Symbol #2584, Derivative General Symbol #239	
Authority General Symbol #2505, Derivative General Symbol #41 [Cent...	
Authority Face #1939, Derivative Face #3360	
Authority Face #1929, Derivative Face #3350	
Authority Face #1919, Derivative Face #3340	
Authority Face #1909, Derivative Face #3330	
Authority Face #1901, Derivative Face #3322	
Authority Face #1891, Derivative Face #3312	
Authority Face #1881, Derivative Face #3302	
Authority Face #1869, Derivative Face #3290	
Authority Face #1859, Derivative Face #3280	

- Any PMI that cannot be directly compared gets put into a review section in the results tree.

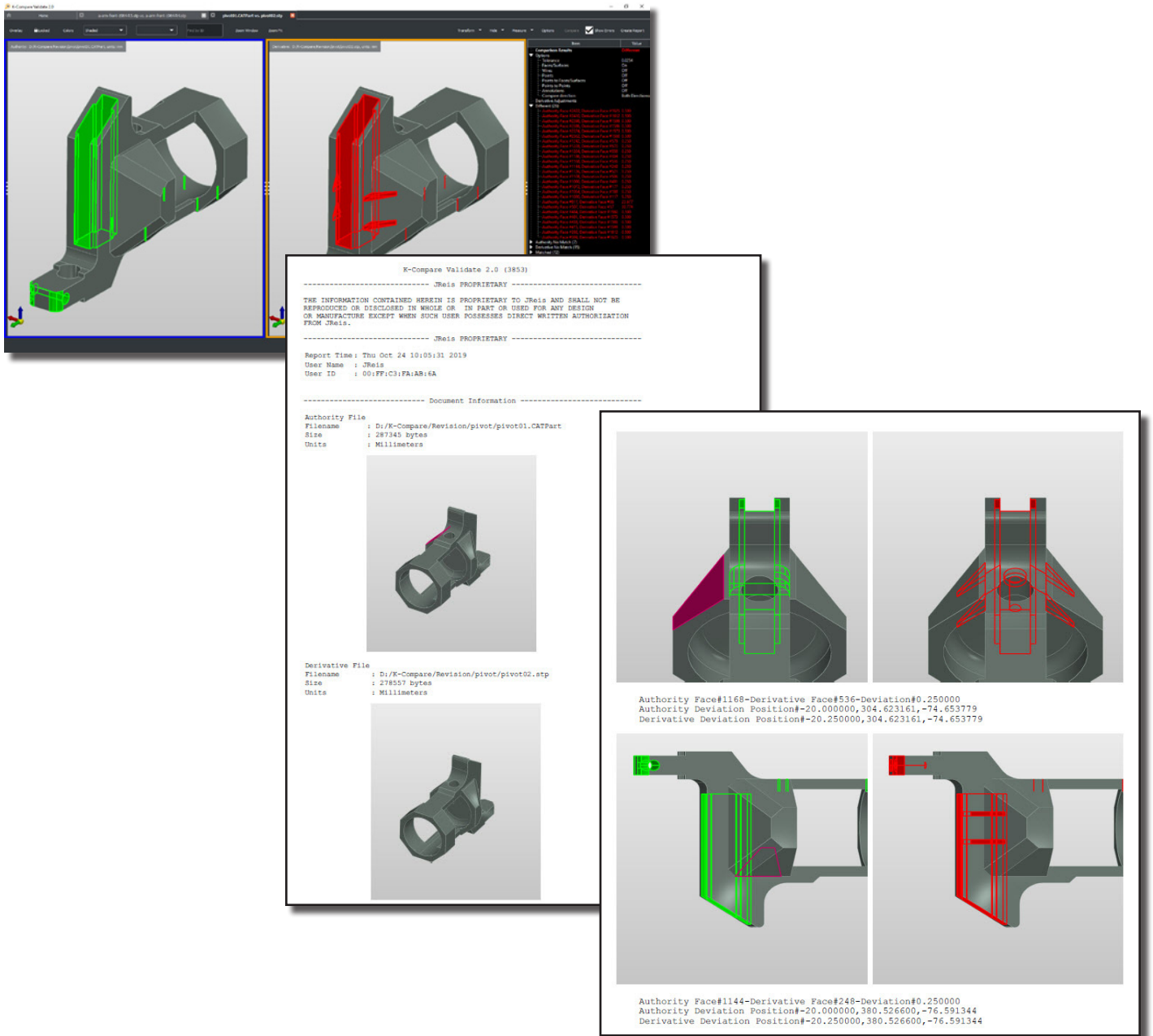
Item	Value
Comparison Results	
Different	
Options	
Tolerance	0.001
Faces/Surfaces	On
Wires	Off
Points	Off
Points to Faces/Surfaces	Off
Points to Points	Off
Annotations	On
Compare direction	Both Directions
Derivative Adjustments	
Different (1)	
Authority Radial Dimension #4040, Derivative Radial Dimension #1338 Annotations Error	
Matched (130)	
Review (3)	
Authority Linear Dimension #3943, Derivative Linear Dimension #338 [...]	
Authority Linear Dimension #3602, Derivative Linear Dimension #1402 [...]	
Authority Surface Texture #3602, Derivative Surface Texture #1402 [...]	
<ul style="list-style-type: none"> Zoom To Walk Treat As Different Treat As Matched 	

Any PMI in the review area of the compare results can be treated as different or matched by the user

PDF report captures

K-Compare Validate PDF reporting option has been enhanced with automatic image captures of each difference in the files.

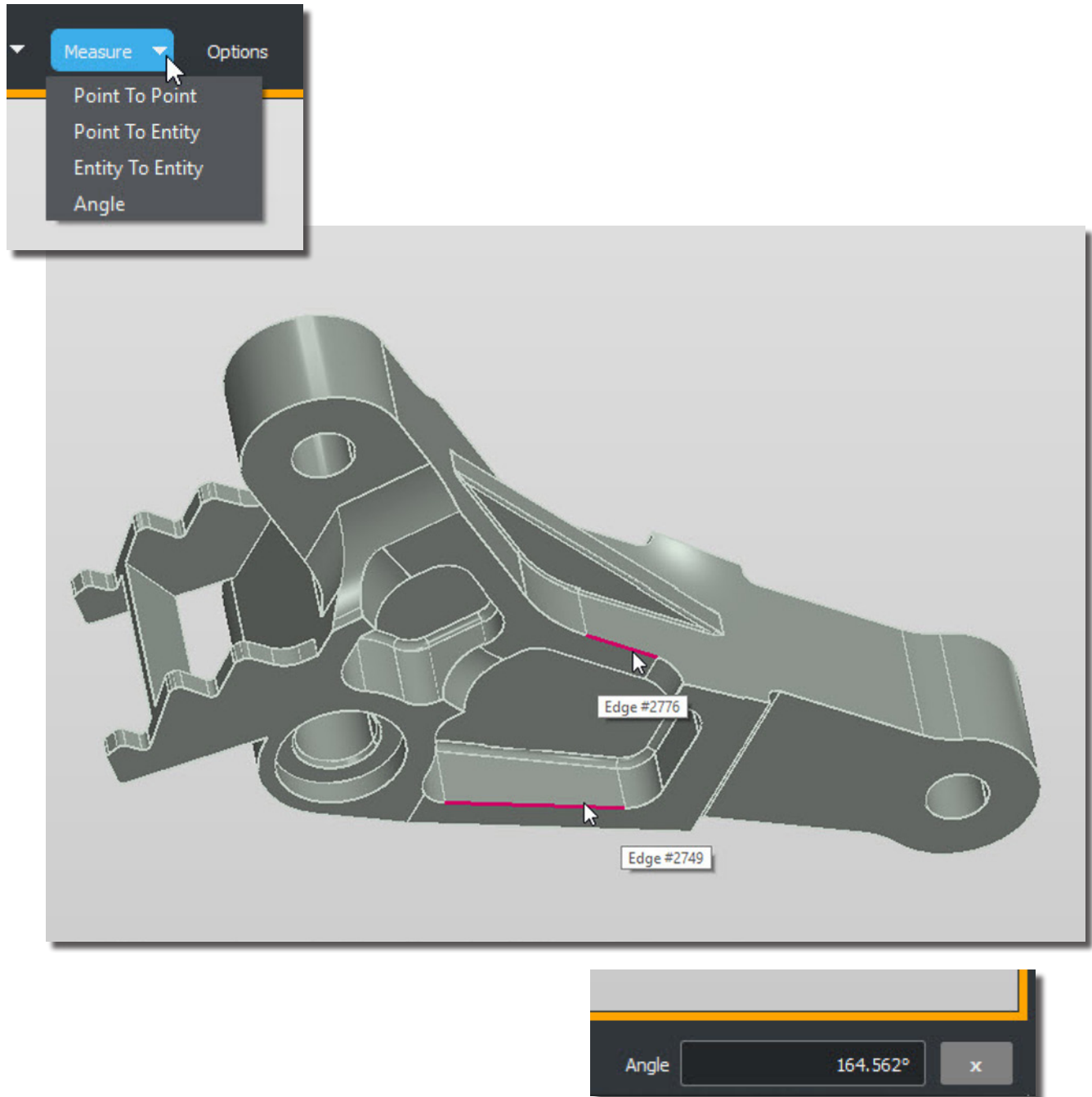
- Authority and derivative captures for each difference.
- User definable **On** or **Off** capture option.
- Captures are automatically inserted into the PDF report.



Measure Angle

The Measure function in K-Compare Validate has been enhanced with a measure angle option

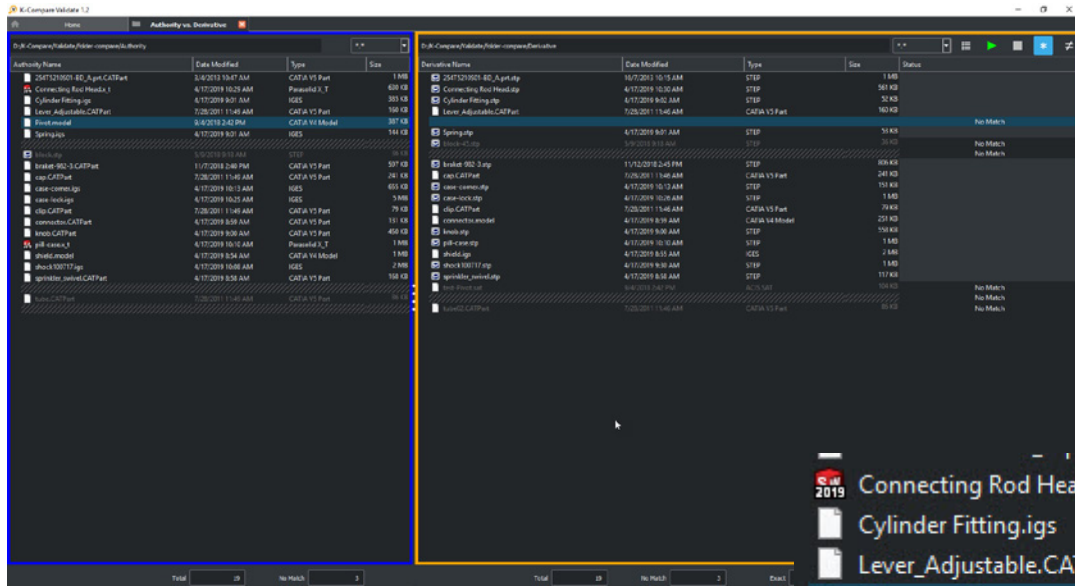
- Users can now quickly measure the angles simply by selecting two edges of a model.



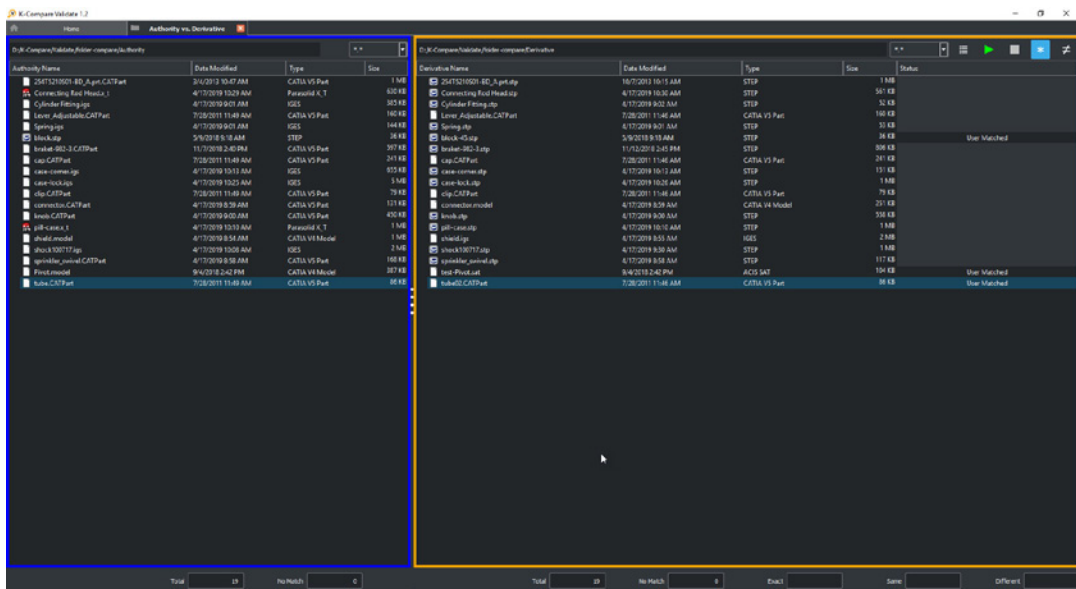
Folder Compare

The Folder Compare function has been enhanced to allow the user to align mismatched file names.

- Users can now align (match) any two files from any two folders for comparison.
- The function is easily accessible by using the right mouse button on a mismatched file.
- Authority files can be aligned to derivative files or derivative files to authority files



Folders with mismatched files



Folders with matching files after using the Align function

Read Formats

K-Compare Validate continues improvements on its extensive format read capabilities with several format updates.

ACIS

- Read extended to 2019

CATIA V6

- Read extended to R2018x, R2019x

CREO, Pro/E

- Read extended to V6.0

Inventor

- Read extended to 2020

Kosmos

- Read extended to 2.0

NX

- Read extended to 1872 Series (upto 1884)

Parasolid

- Read extended to 31, 32

Solid Edge

- Read extended to 2020



Kubotek3D

2 Mount Royal Ave. Suite 500, Marlborough, MA 01752

Phone: 800-372-3872

www.kubotek3d.com

sales@kubotek3d.com