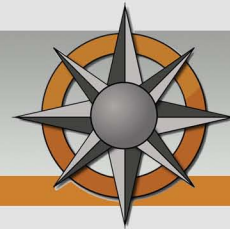


Kubotek Comparison Suite



V12.5

Whats
NEW

Learn about the latest release of the leading engineering model comparison, validation, and reporting software from Kubotek Corporation.

Table of Contents

New Capabilities

CATIA V5 Version to Version Compare 3
Disposition Comments in Validation Reports 3

CAD File Reading

Inventor 2014 4
Parasolid R26 4
Option for CATIA V5 Hidden Assembly Instances Support 4

Productivity

Chain Selection Options 4
More Information in Geometry ToolTips 5

Setup

Product Code now Optional in License Wizard 5



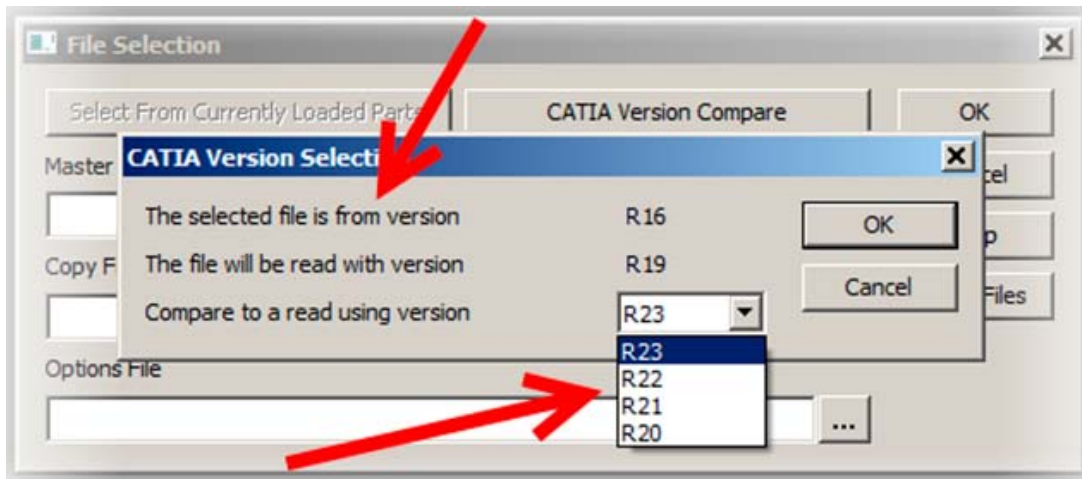
Benefits

Kubotek Comparison Suite 2014 V12.5 update adds several new capabilities, updated translators, and user-driven improvements to save time and improve user control.

New Capabilities

CATIA V5 Version to Version Compare

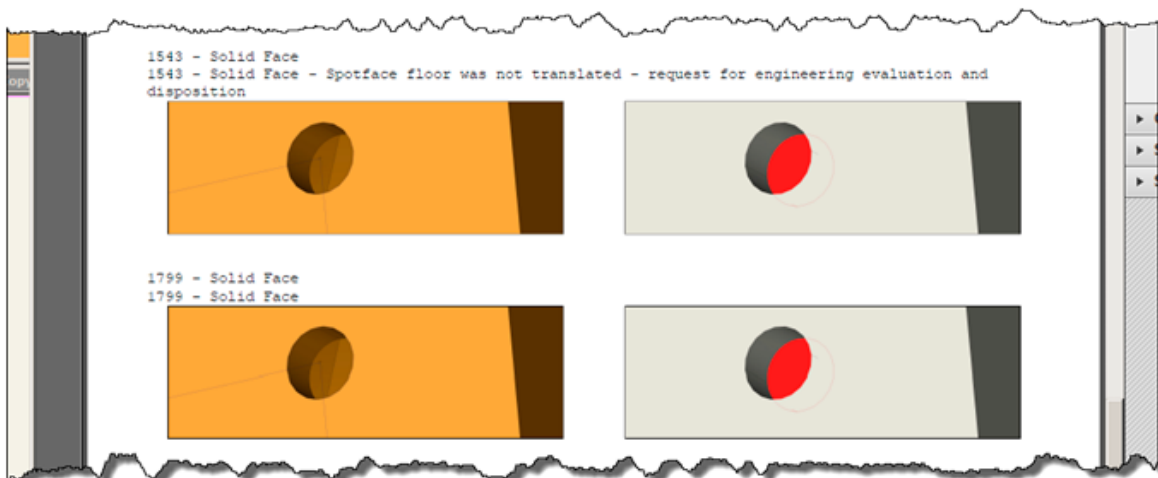
A new function allows users to validate that converting parts to a new release of CATIA V5 has not introduced geometric differences.



Comparing the same part as written in two releases of CATIA finds potential upgrade problems

Disposition Comments in Validation Reports

A new option in the Difference Results Window allows users to enter disposition text for each difference. This text appears in the validation quality document with the related geometry.



Validation quality documents now include user-entered disposition text

Read File Formats

Inventor 2014

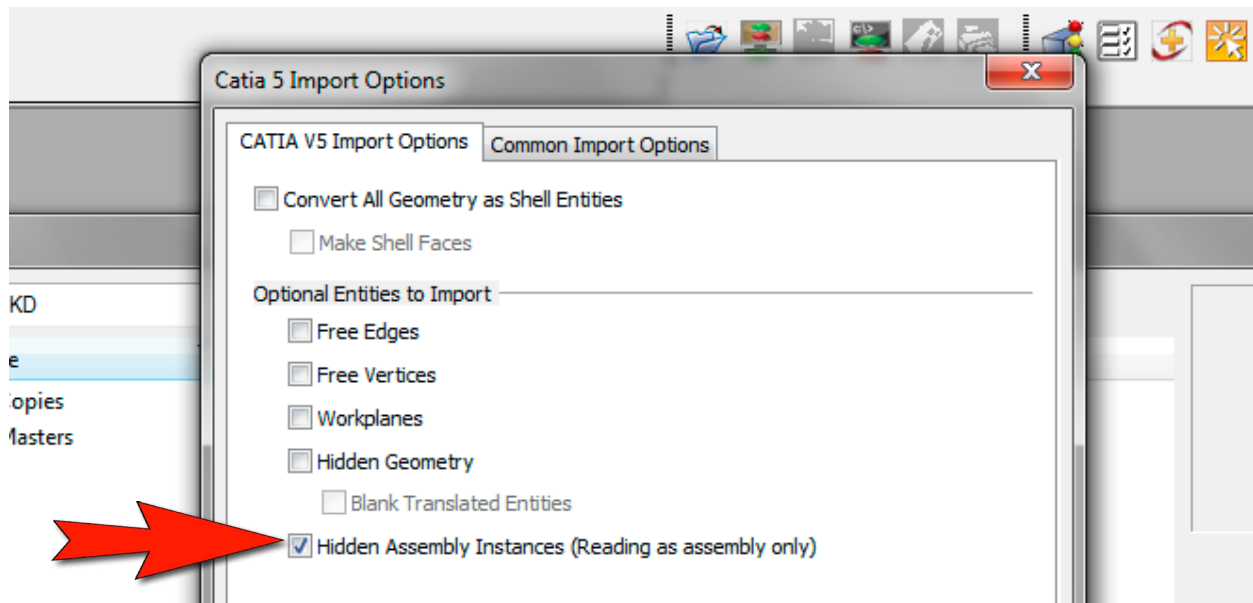
Autodesk Inventor Import has been enhanced to support version 2014 files.

Parasolid R26

Siemens PLM Parasolid Import has been enhanced to support version R26 files.

Option for CATIA V5 Hidden Assembly Instances Support

A new CATIA V5 Import option allows Hidden Assembly Instances to be read into the Comparison Suite.



The new assembly option gives the user control over seeing hidden assembly instances or not

Productivity

Chain Selection Options

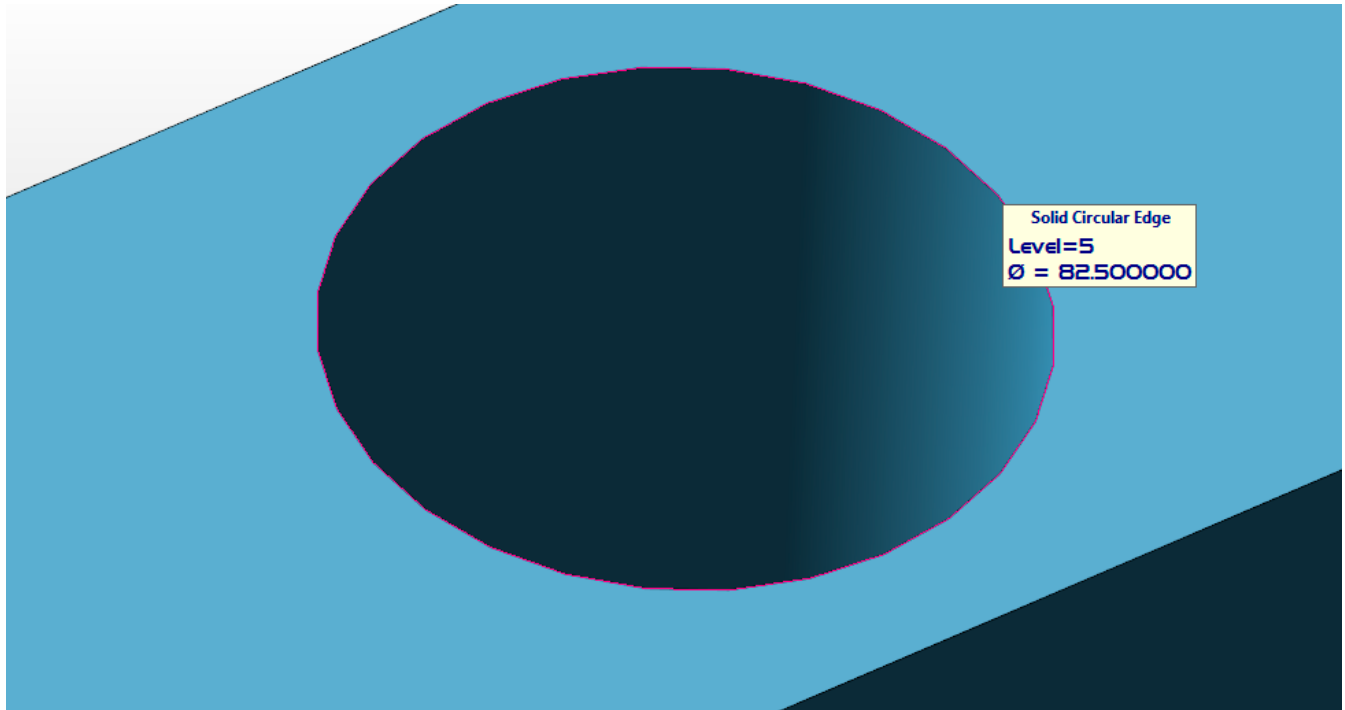
“Chain” selection of curves has been enhanced with new options to control how Comparison Suite looks for closed sets of curves. These options save clicks when multiple profiles are needed or construction plane restrictions need to be toggled.



Four new options in the Chain menu make selecting closed sets of curves even easier

More Information in Geometry ToolTips

Geometry ToolTips which appear next to the cursor during fly-over highlighting now provide level number for all entities and entity components (faces, edges, flowlines, etc.) to help quickly identify the entity location.



The ToolTip now shows the circular edge highlighted here belongs to a solid on level 5

Setup

Product Code now Optional in License Wizard

The License Wizard 2014 program used to set up Activation Licensing can now determine the necessary product code from a correctly entered Activation Code. This eliminates a minor source of errors that could prevent successful license activation.

KUBOTEK[®]
MASTER YOUR GEOMETRY

Kubotek USA, Inc.
2 Mount Royal Ave. Suite 500, Marlborough, MA 01752
Phone: 800-372-3872 www.kubotek3d.com sales@kubotekusa.com